

Caution

Initial Registration of E5052A

When you start up the E5052A for the first time or after executing system recovery, you need to perform the initial registration of the Windows 2000 operating system of the E5052A.

You cannot use the front panel keys during the initial registration of the E5052A therefore CONNECT THE MOUSE AND THE KEYBOARD BEFORE TURNING ON THE POWER.

For more information on the initial registration, see the reverse side of this paper.



Initial Registration of E5052A

When you start up the E5052A for the first time or after executing system recovery, you need to perform the initial registration of the Windows 2000 operating system used in the E5052A.

NOTE You cannot use the front panel keys during the initial registration of the E5052A, so be sure to connect the mouse and keyboard before turning on the power.

NOTE If you perform the following procedure incorrectly, a message appears asking whether to return to the previous registration screen and perform the registration again. In this case, follow the instruction to return to the previous registration screen.

Step1. Turns on the E5052A.

Step2. The Windows 2000 Professional Setup Wizard appears. Click the **Next >** button.

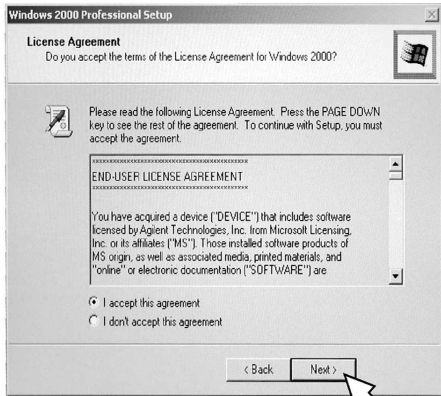
Windows 2000 Professional Setup Wizard



e5052ase4003

Step3. In the Windows 2000 Professional Setup dialog box, select the **I accept this agreement** box and click the **Next >** button. Then, the Windows 2000 operating system restarts automatically.

Windows 2000 Professional Setup dialog box



e5052ase4004

Step4. The Network Identification Wizard appears. Click the **Next >** button.

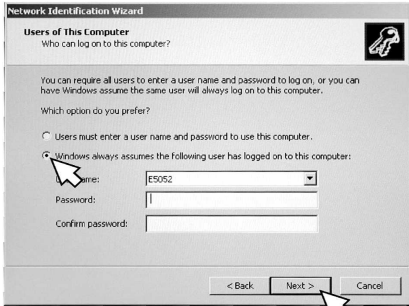
Network Identification Wizard



e5052ase4005

Step5. In the Network Identification Wizard dialog box (1/2), select the **Windows always assumes the following user has logged on to this computer** box and check that **E5052** is in the **User Name** box. If not, type in **E5052**. Then type in **E5052** both in **Password** box and **Confirm password** box. Click the **Next >** button.

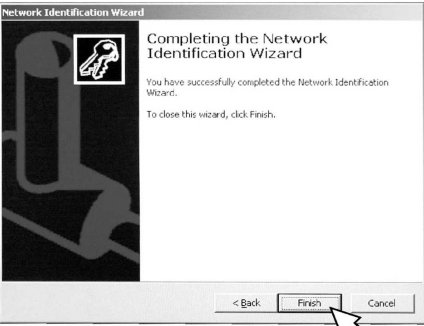
Network Identification Wizard dialog box (1/2)



e5052ase4006

Step6. In the Network Identification Wizard dialog box (2/2), click the **Finish** button to finish the initial registration of the E5052A. Then, the measurement display of the E5052A appears.

Network Identification Wizard dialog box (2/2)



e5052ase4007

